

Garden Design

The main garden includes:

- a **wheelchair accessible path** between the current paved greenway, the garden, and the sidewalk around the playground, to encourage walkers to 'take a detour' through the garden
- an 'enchanted' feel, with **public art and playscapes** intended to tickle the imagination and draw children in, such as a butterfly bench, toadstool table, and special child-size entrance
- see-through **deer fencing, with unlocked gates**
- 35 **allotments** of 4 ft x 8 ft each, assigned on a first-come-first-serve basis and kept by fulfilling all required duties such as maintenance of the allotment and assigned commons – uniform and built from materials that will last 20+years: galvanized steel and recycled plastic lumber
- **communal** beds tended and harvested by members (allotment and non-allotment), with a portion donated to charities
- **commons** which may be picked by anyone, consisting primarily of dwarf fruit trees, **berry bushes**, herbs, edible perennials, salad veggies and cutflowers - made of ferrocement, which will last 20+ years and can be curved artistically
- **flower**-lined entryways and paths
- educational signage to help visitors know what they can pick
- an outdoor **classroom** space for use by local schools and colleges, and for gardening workshops and gatherings
- **compost** bins for garden waste (no food waste) and special **rat-proof** green cones for any food scraps



Figure 1: Example of deer fencing, decorated



Figure 2: Galvanized metal and lumber



Figure 3: Curvy ferrocement beds



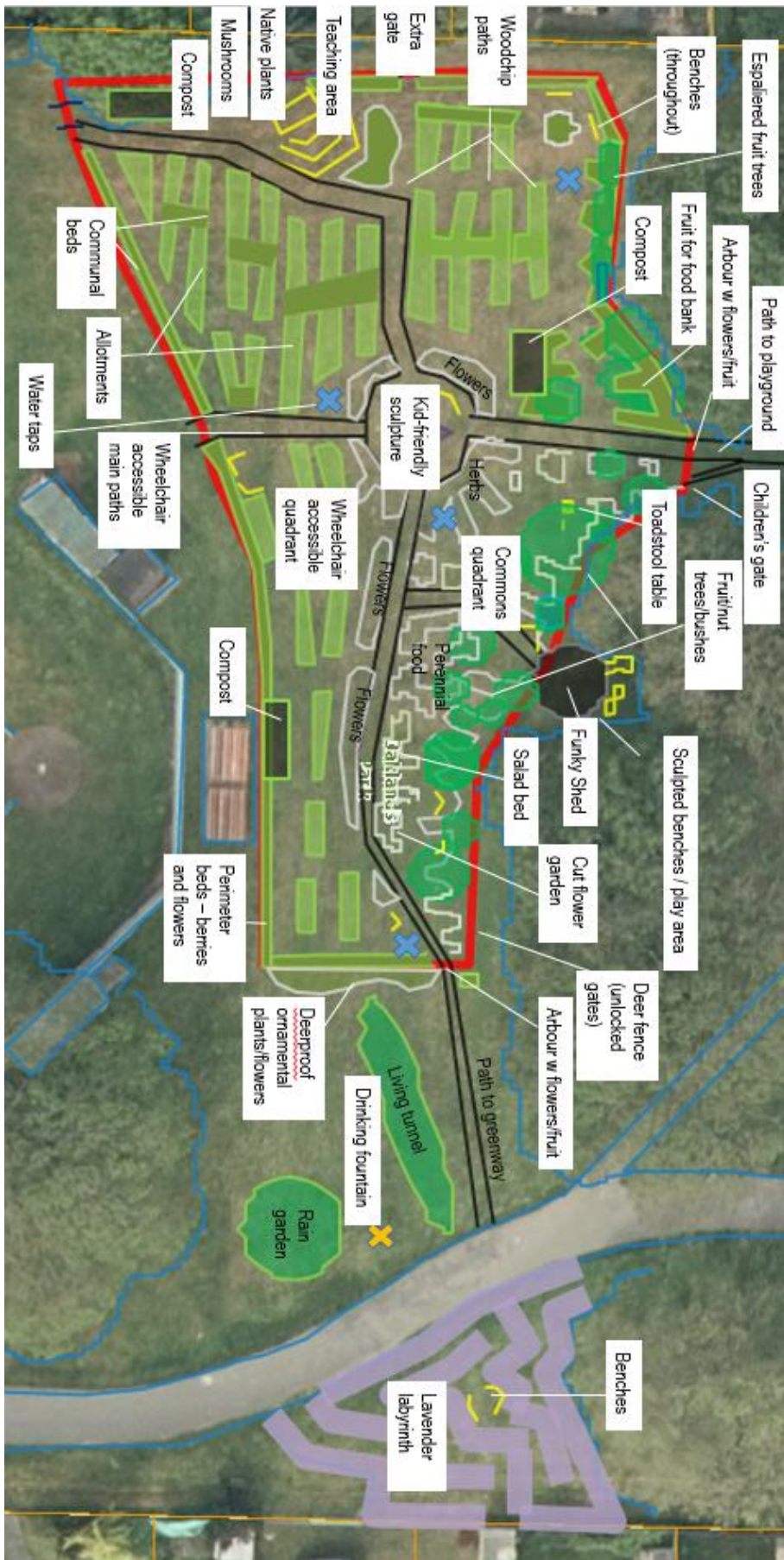
Figure 4: Living willow sculpture for kids play

Outside the main fenced garden, there will be:

- an animal sculpture made of living willow, forming a **tunnel that children can play in**
- a **rain garden** for excess winter water
- a **drinking fountain** that will drain, via an open channel that children can play with, into the rain garden
- a small **labyrinth** made of lavender, with a bench in the middle, for meditators and children to enjoy
- a locked, rat-proof **shed with an enchanted garden theme** (such as a giant mushroom), constructed of a sculptable material such as cobb or ferrocement that will include **play features** such as sculpted benches, climbing nooks, arches



Figure 5: Shed inspiration



For more information contact

Hazel Lyder
 Community Development Coordinator
 Oaklands Community Association

Tel: 250 370 9101

Email: community@oaklandsca.com

